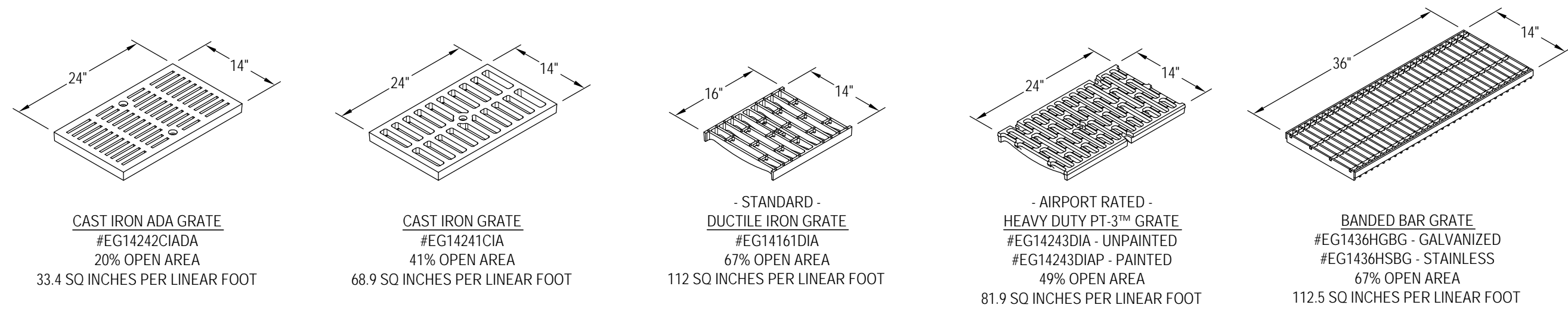
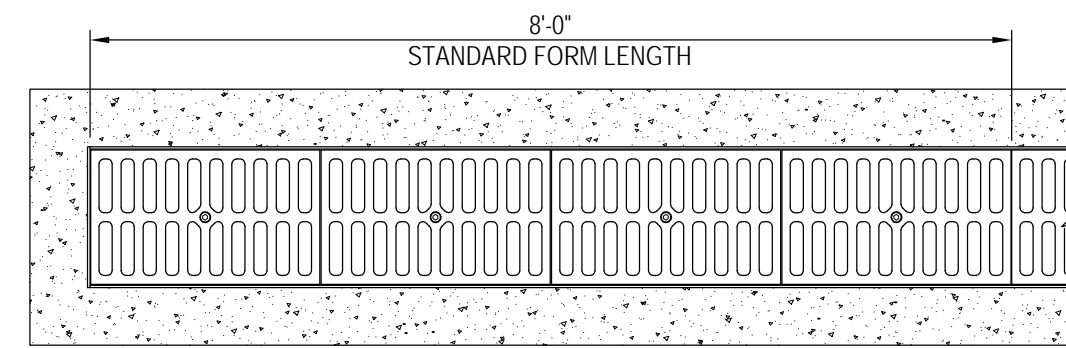


EconoDrain® Series #12
STANDARD EPS FORMS
LENGTH SCALE 1:20
DEPTH SCALE 1:20



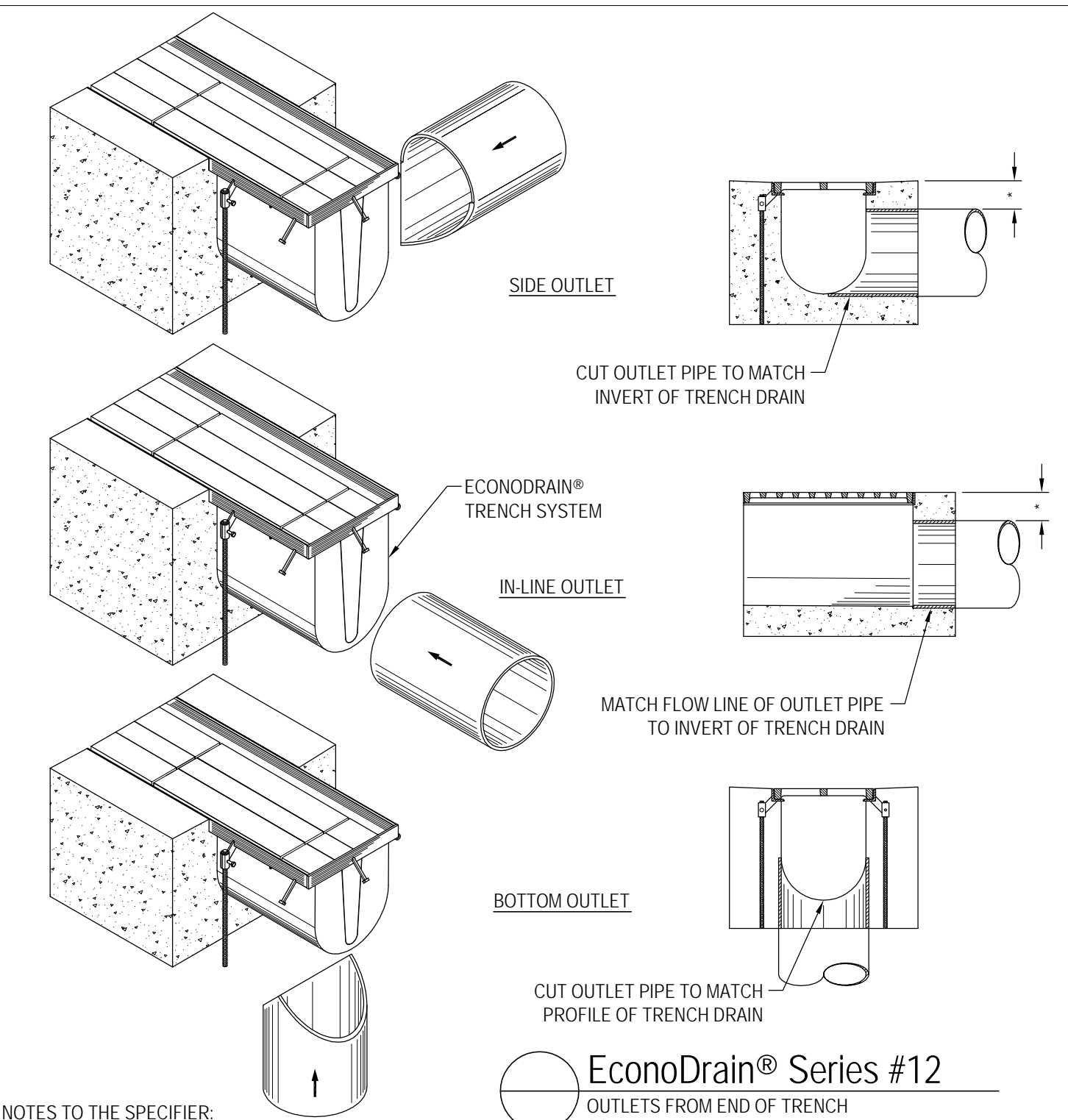
EconoDrain® Series #12
GRATE SELECTION
SCALE 1:20



EconoDrain® Series #12
FINISHED PLAN VIEW
SCALE 1:20

EPS FORM	DEPTH		FLOW GPM
	MIN	MAX	
10	8"	8 1/2"	730
11	8 1/2"	9"	814
12	9"	9 1/2"	899
13	9 1/2"	10"	985
14	10"	10 1/2"	1072
15	10 1/2"	11"	1159
16	11"	11 1/2"	1247
17	11 1/2"	12"	1335
18	12"	12 1/2"	1425
19	12 1/2"	13"	1514
20	13"	13 1/2"	1604
21	13 1/2"	14"	1694
22	14"	14 1/2"	1785
23	14 1/2"	15"	1876
24	15"	15 1/2"	1967
25	15 1/2"	16"	2058
26	16"	16 1/2"	2150
27	16 1/2"	17"	2242
28	17"	17 1/2"	2334
29	17 1/2"	18"	2426
30	18"	18 1/2"	2519
31	18 1/2"	19"	2611
32	19"	19 1/2"	2704
33	19 1/2"	20"	2797
34	20"	20 1/2"	2890
35	20 1/2"	21"	2983
36	21"	21 1/2"	3076
37	21 1/2"	22"	3169
38	22"	22 1/2"	3263
39	22 1/2"	23"	3356
40	23"	23 1/2"	3450
41	23 1/2"	24"	3543
42	24"	24 1/2"	3637
43	24 1/2"	25"	3731
44	25"	25 1/2"	3824
45	25 1/2"	26"	3918

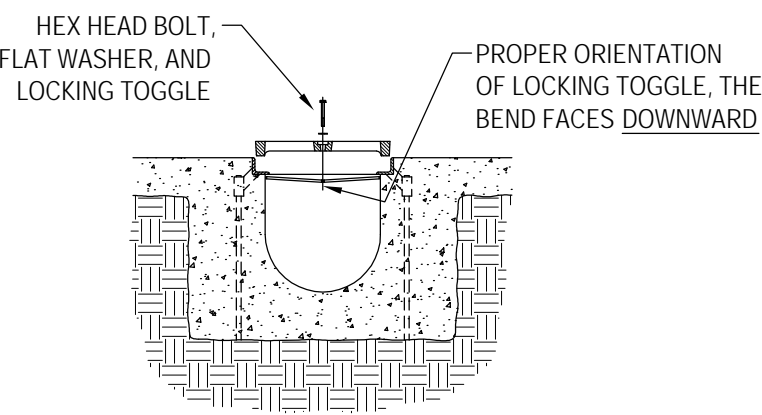
EPS FORM CHART



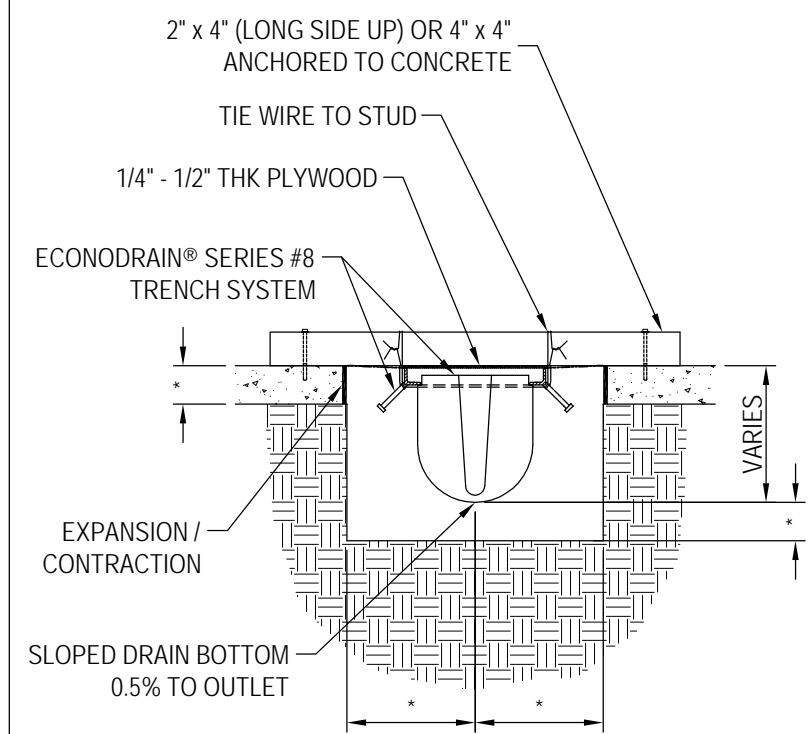
- NOTES TO THE SPECIFIER:**
1. ADD REBAR AS REQUIRED.
 2. SPECIFY MINIMUM CONCRETE ENCASEMENT.
 3. MINIMUM CONCRETE COVERAGE OF OUTLET PIPE MUST BE GREATER THAN 4 INCHES (LABELED WITH *).
 4. FINAL CONCRETE THICKNESS PER LOCAL ENGINEERING REGULATIONS AND GUIDELINES.

- CONSTRUCTION NOTES:**
1. INSTALLATION TO BE COMPLETED IN ACCORDANCE WITH MANUFACTURERS SPECIFICATIONS.
 2. SECURE OUTLET PIPE PRIOR TO CONCRETING OPERATIONS.
 3. DO NOT SCALE DRAWINGS.

EconoDrain® Series #12
OUTLETS FROM END OF TRENCH
SCALE 1:20

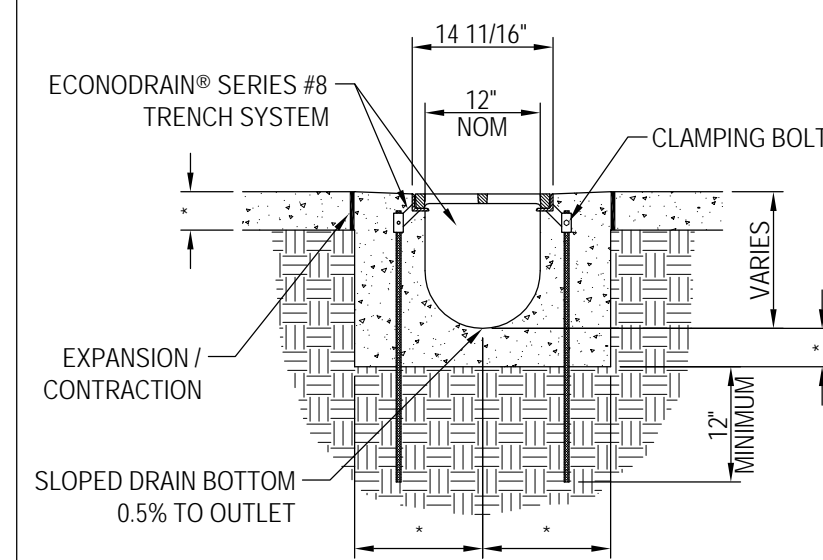


EconoDrain® Series #12
GRATE LOCKING DEVICE INSTALLATION
SCALE 1:20



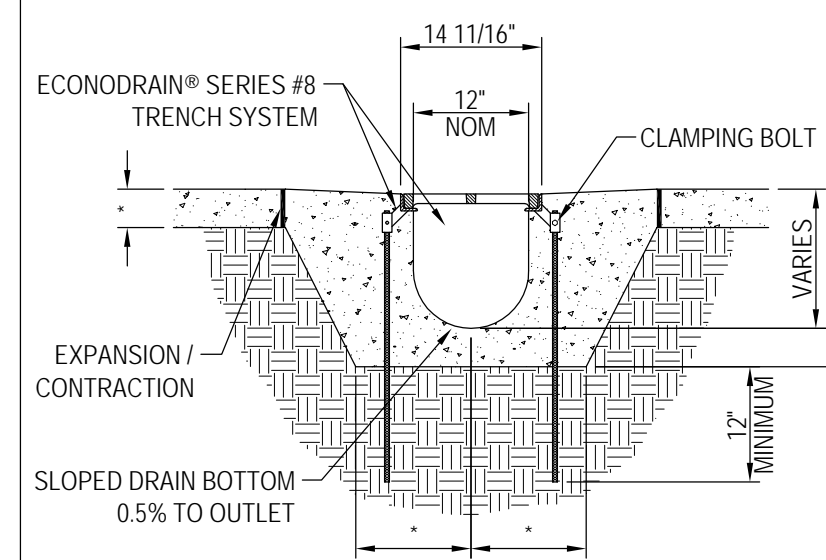
EconoDrain® Series #12
SUSPENDING FORMERS FROM EXISTING SLAB
SCALE 1:20

- NOTES TO THE SPECIFIER:**
1. ADD REBAR AS REQUIRED
 2. SPECIFY REQUIRED DIMENSIONS (LABELED WITH *)
 3. SHOW TOP OF GRATE ELEVATION IN PLAN VIEW
 4. EXPANSION / CONTRACTION JOINT PER LOCAL ENGINEERING REGULATIONS AND GUIDELINES
 5. STANDARD CHANNEL LENGTH IS 8'-0" (96")
 6. STANDARD CHANNEL SLOPE IS 0.5%



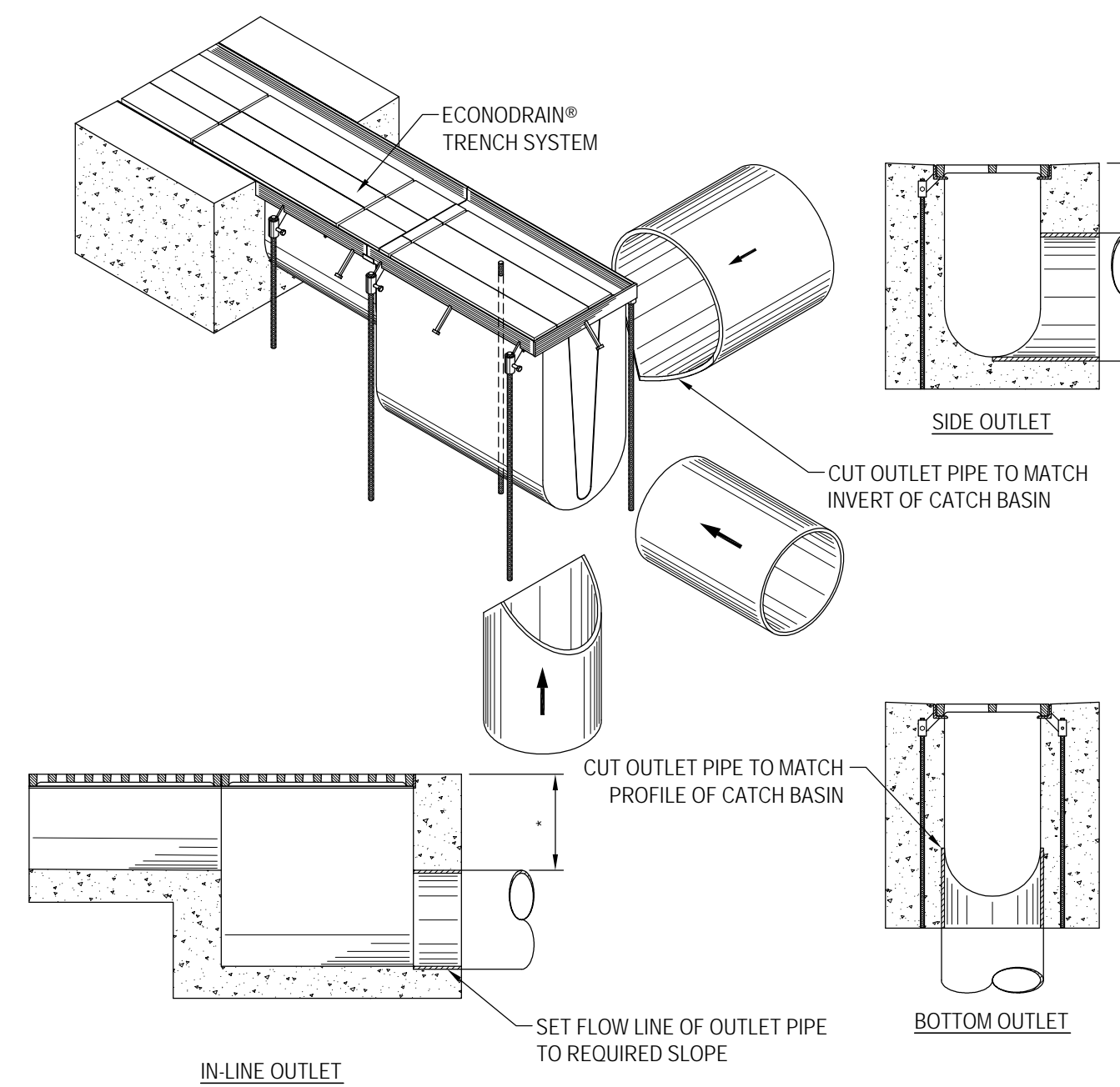
EconoDrain® Series #12
SAWCUT EXISTING SLAB INSTALLATION DETAIL
SCALE 1:20

- NOTES TO THE SPECIFIER:**
1. ADD REBAR AS REQUIRED
 2. SPECIFY REQUIRED DIMENSIONS (LABELED WITH *)
 3. SHOW TOP OF GRATE ELEVATION IN PLAN VIEW
 4. EXPANSION / CONTRACTION JOINT PER LOCAL ENGINEERING REGULATIONS AND GUIDELINES
 5. STANDARD CHANNEL LENGTH IS 8'-0" (96")
 6. STANDARD CHANNEL SLOPE IS 0.5%



EconoDrain® Series #12
MONOLITHIC POUR INSTALLATION DETAIL
SCALE 1:20

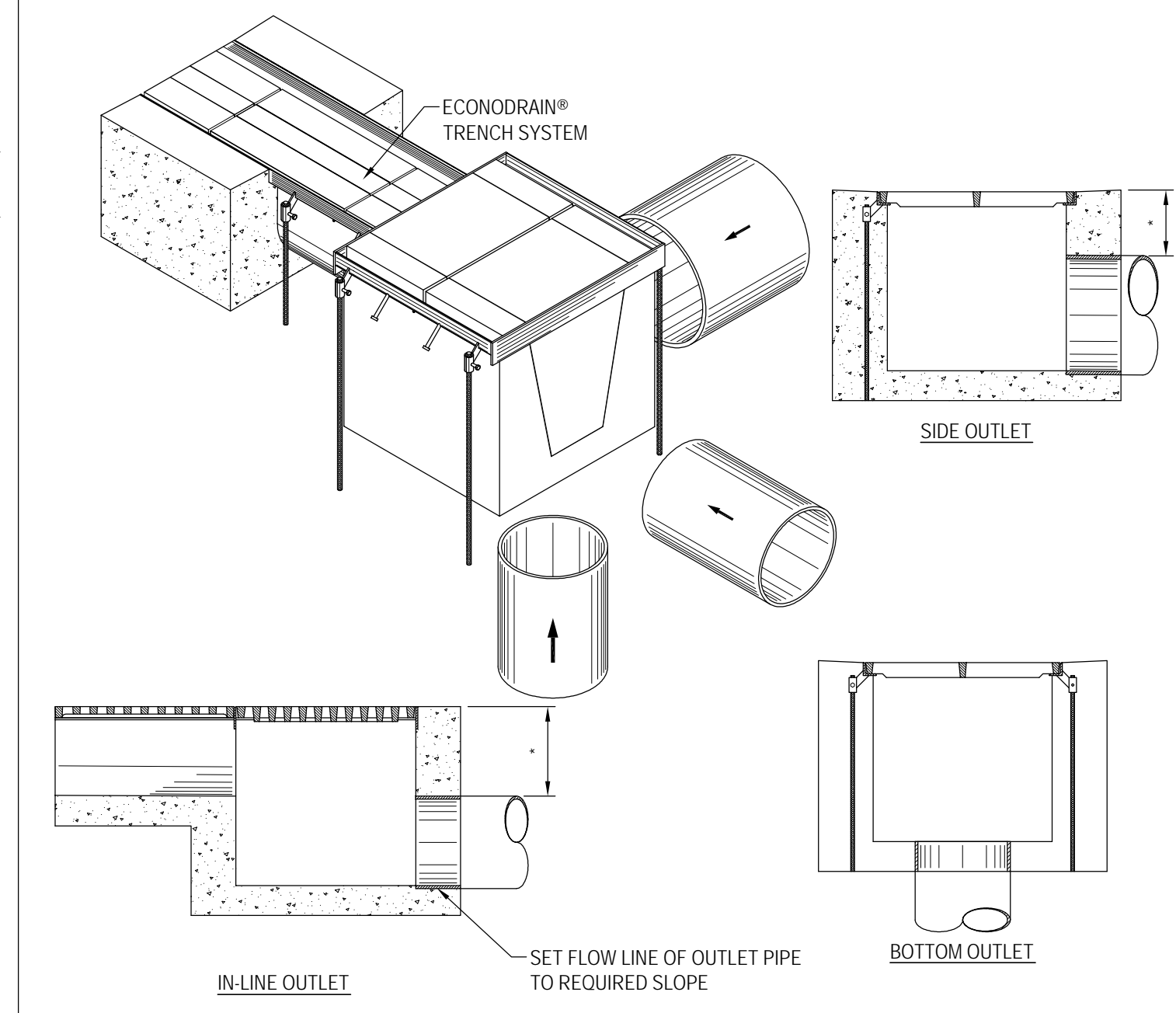
- NOTES TO THE SPECIFIER:**
1. ADD REBAR AS REQUIRED
 2. SPECIFY REQUIRED DIMENSIONS (LABELED WITH *)
 3. SHOW TOP OF GRATE ELEVATION IN PLAN VIEW
 4. EXPANSION / CONTRACTION JOINT PER LOCAL ENGINEERING REGULATIONS AND GUIDELINES
 5. STANDARD CHANNEL LENGTH IS 8'-0" (96")
 6. STANDARD CHANNEL SLOPE IS 0.5%



- NOTES TO THE SPECIFIER:**
1. ADD REBAR AS REQUIRED.
 2. SPECIFY MINIMUM CONCRETE ENCASEMENT.
 3. MINIMUM CONCRETE COVERAGE OF OUTLET PIPE MUST BE GREATER THAN 4 INCHES (LABELED WITH *).
 4. FINAL CONCRETE THICKNESS PER LOCAL ENGINEERING REGULATIONS AND GUIDELINES.

- CONSTRUCTION NOTES:**
1. INSTALLATION TO BE COMPLETED IN ACCORDANCE WITH MANUFACTURERS SPECIFICATIONS.
 2. SECURE OUTLET PIPE PRIOR TO CONCRETING OPERATIONS.
 3. DO NOT SCALE DRAWINGS.

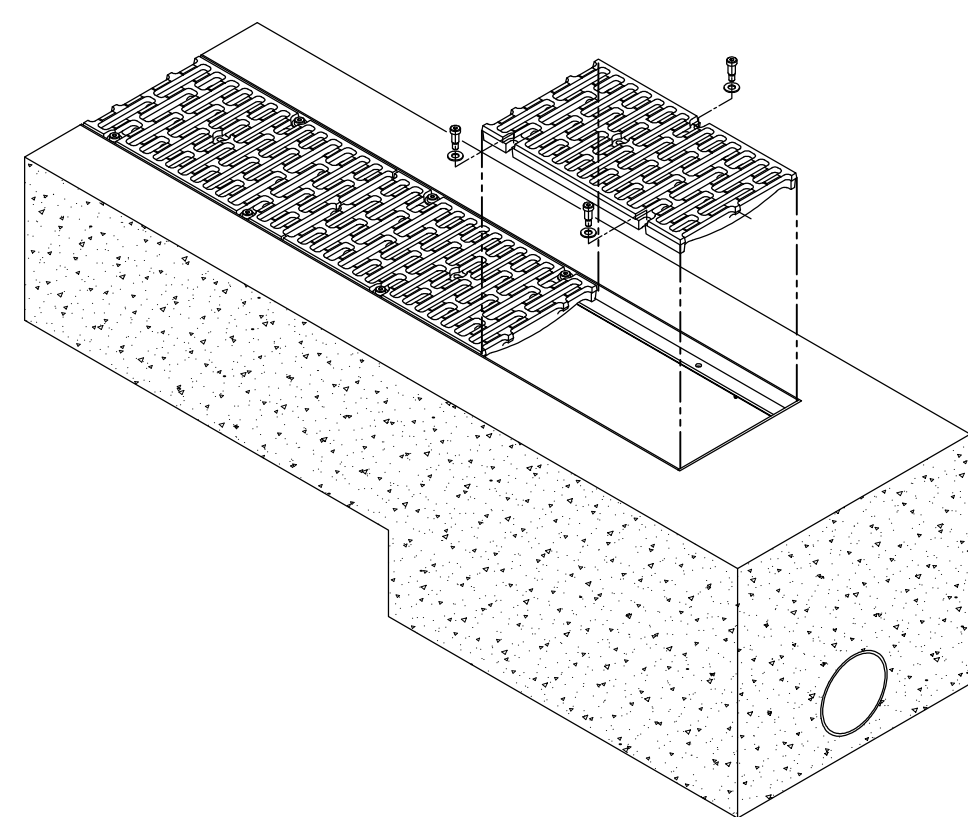
EconoDrain® Series #12
OUTLETS FROM IN-LINE CATCH BASIN
SCALE 1:20



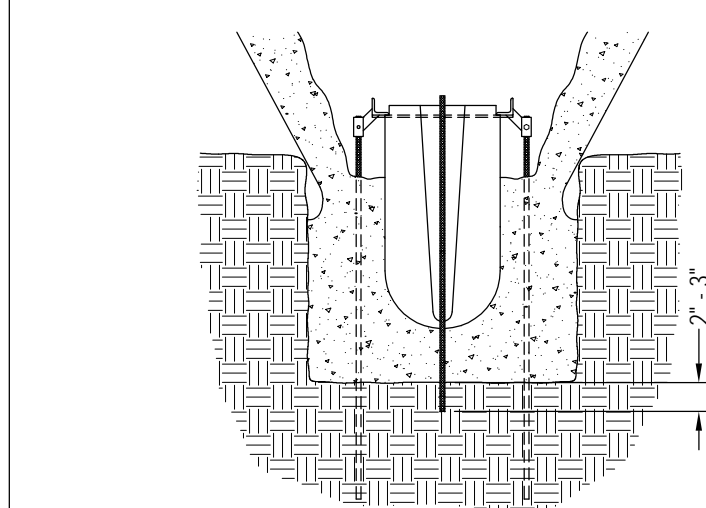
- NOTES TO THE SPECIFIER:**
1. ADD REBAR AS REQUIRED.
 2. SPECIFY MINIMUM CONCRETE ENCASEMENT.
 3. MINIMUM CONCRETE COVERAGE OF OUTLET PIPE MUST BE GREATER THAN 4 INCHES (LABELED WITH *).
 4. FINAL CONCRETE THICKNESS PER LOCAL ENGINEERING REGULATIONS AND GUIDELINES.

- CONSTRUCTION NOTES:**
1. INSTALLATION TO BE COMPLETED IN ACCORDANCE WITH MANUFACTURERS SPECIFICATIONS.
 2. SECURE OUTLET PIPE PRIOR TO CONCRETING OPERATIONS.
 3. DO NOT SCALE DRAWINGS.

EconoDrain® Series #12
OUTLET FROM CATCH BASIN
SCALE 1:20



EconoDrain® Series #12
HEAVY DUTY PT-3™ GRATE INSTALLATION
SCALE 1:20

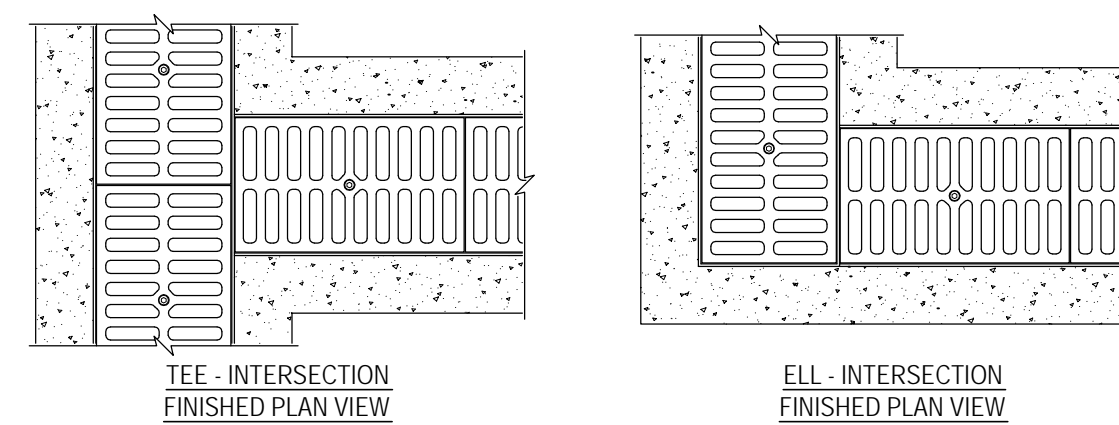


EconoDrain® Series #12
INSTALLING FORMERS IN DEEPER PORTION OF SYSTEM
SCALE 1:20

FOUR (4) HOLES ARE PROVIDED THROUGH THE CENTER OF THE DEEPER EPS FORMS FOR INSERTION OF REBAR. THESE HOLES MAINTAIN VERTICAL ALIGNMENT DURING INITIAL CONCRETE PLACEMENT. THE REBAR IS DRIVEN ONLY A FEW INCHES INTO THE GROUND OR SUB-BASE. CONCRETE MUST BE FILLED ON BOTH SIDES OF THE FORM AS EVENLY AS POSSIBLE. MULTIPLE PASSES ON EITHER SIDE ARE PREFERABLE WHILE AVOIDING FILLING THE TRENCH FROM ONE SIDE.

SEE INSTALLATION INSTRUCTIONS STEP 15: HOW TO POUR CONCRETE AROUND ECONODRAIN® TRENCH FORMING SYSTEM.

THE REBAR MUST BE REMOVED ONCE THE CONCRETE/FORM PRESSURE EQUALIZES BUT PRIOR TO THE CONCRETE SETTING UP.



- STEP 1:** REMOVE ANCHOR STAND OR STUD IF NECESSARY.
- STEP 2:** TRIM INTERSECTION EPS FORM TO THE HEIGHT OF BOTTOM FRAME.
- STEP 3:** APPLY ADHESIVES TO MATING SURFACES.
- STEP 4:** FIELD TRIM INCOMING EPS FORMER AS NEEDED.
- STEP 5:** TAPE JOINT OF EPS FORMERS AS NEEDED.

EconoDrain® Series #12
TEE & ELL INTERSECTION KITS
SCALE 1:20