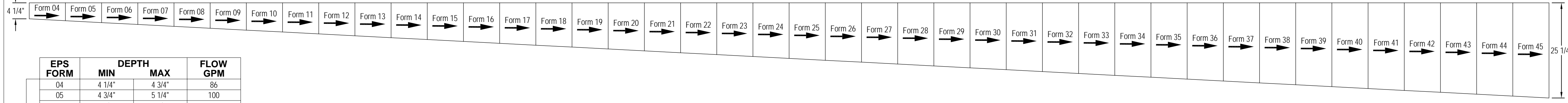


42 FORMS @ 8'-0" = 336'-0"



EPS FORM	DEPTH		FLOW GPM
	MIN	MAX	
04	4 1/4"	4 3/4"	86
05	4 3/4"	5 1/4"	100
06	5 1/4"	5 3/4"	115
07	5 3/4"	6 1/4"	130
08	6 1/4"	6 3/4"	144
09	6 3/4"	7 1/4"	159
10	7 1/4"	7 3/4"	174
11	7 3/4"	8 1/4"	189
12	8 1/4"	8 3/4"	204
13	8 3/4"	9 1/4"	219
14	9 1/4"	9 3/4"	234
15	9 3/4"	10 1/4"	250
16	10 1/4"	10 3/4"	265
17	10 3/4"	11 1/4"	280
18	11 1/4"	11 3/4"	295
19	11 3/4"	12 1/4"	310
20	12 1/4"	12 3/4"	325
21	12 3/4"	13 1/4"	340
22	13 1/4"	13 3/4"	356
23	13 3/4"	14 1/4"	371
24	14 1/4"	14 3/4"	386
25	14 3/4"	15 1/4"	401
26	15 1/4"	15 3/4"	416
27	15 3/4"	16 1/4"	432
28	16 1/4"	16 3/4"	447
29	16 3/4"	17 1/4"	462
30	17 1/4"	17 3/4"	477
31	17 3/4"	18 1/4"	493
32	18 1/4"	18 3/4"	508
33	18 3/4"	19 1/4"	523
34	19 1/4"	19 3/4"	538
35	19 3/4"	20 1/4"	554
36	20 1/4"	20 3/4"	569
37	20 3/4"	21 1/4"	584
38	21 1/4"	21 3/4"	599
39	21 3/4"	22 1/4"	615
40	22 1/4"	22 3/4"	630
41	22 3/4"	23 1/4"	645
42	23 1/4"	23 3/4"	660
43	23 3/4"	24 1/4"	676
44	24 1/4"	24 3/4"	691
45	24 3/4"	25 1/4"	706

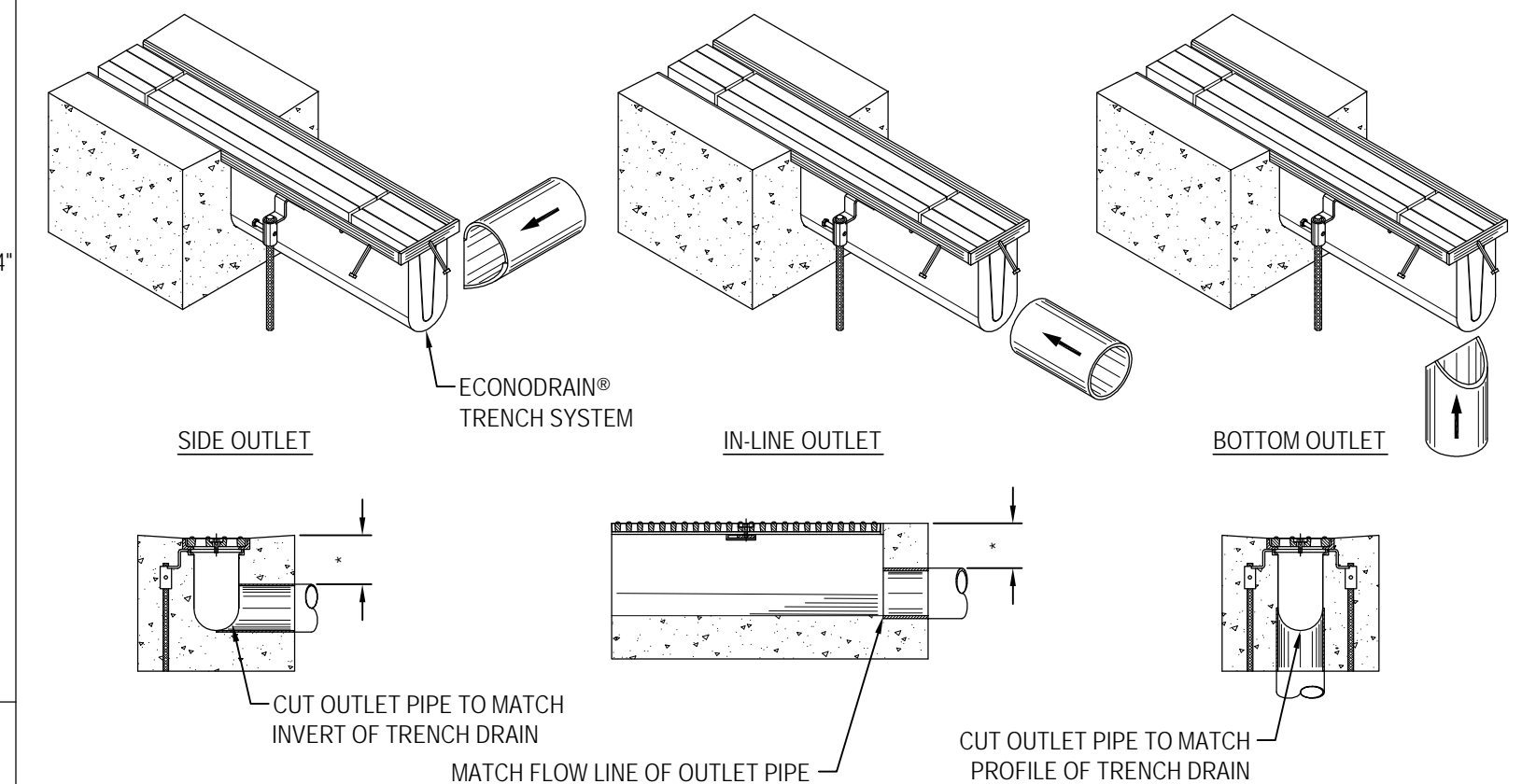
SHALLOW EPS FORMS

DEEP EPS FORMS

EPS FORM CHART

EconoDrain® Series #4

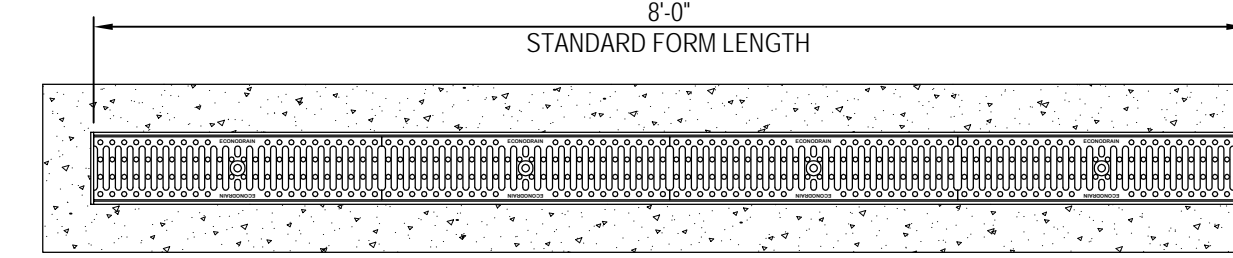
STANDARD EPS FORMS
LENGTH SCALE 1:160
DEPTH SCALE 1:16



- NOTES TO THE SPECIFIER:**
1. ADD REBAR AS REQUIRED.
 2. SPECIFY MINIMUM CONCRETE ENCASEMENT.
 3. MINIMUM CONCRETE COVERAGE OF OUTLET PIPE MUST BE GREATER THAN 4 INCHES (LABELED WITH "4").
 4. FINAL CONCRETE THICKNESS PER LOCAL ENGINEERING REGULATIONS AND GUIDELINES.
- CONSTRUCTION NOTES:**
1. INSTALLATION TO BE COMPLETED IN ACCORDANCE WITH MANUFACTURERS SPECIFICATIONS.
 2. SECURE OUTLET PIPE PRIOR TO CONCRETING OPERATIONS.
 3. DO NOT SCALE DRAWINGS.

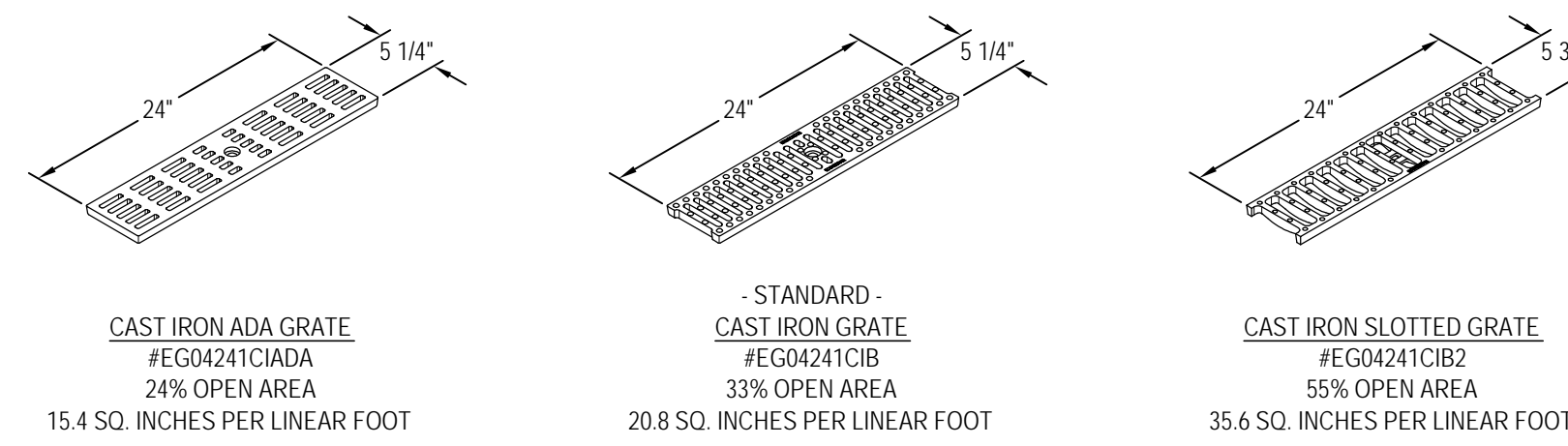
EconoDrain® Series #4

OUTLETS FROM END OF TRENCH
SCALE 1:16



EconoDrain® Series #4

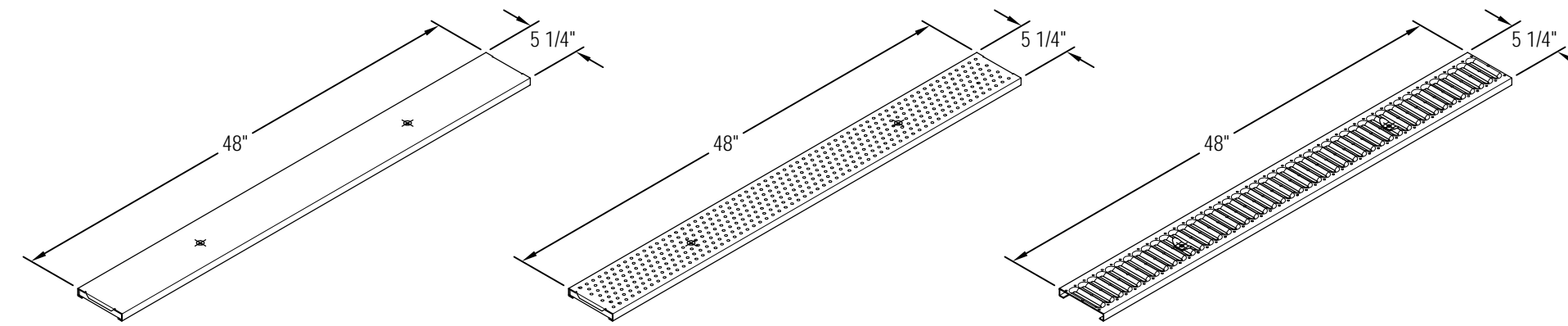
FINISHED PLAN VIEW
SCALE 1:16



CAST IRON ADA GRATE
#EG04241CIADA
24% OPEN AREA
15.4 SQ. INCHES PER LINEAR FOOT

STANDARD CAST IRON GRATE
#EG04241CIB
33% OPEN AREA
20.8 SQ. INCHES PER LINEAR FOOT

CAST IRON SLOTTED GRATE
#EG04241CIB2
55% OPEN AREA
35.6 SQ. INCHES PER LINEAR FOOT



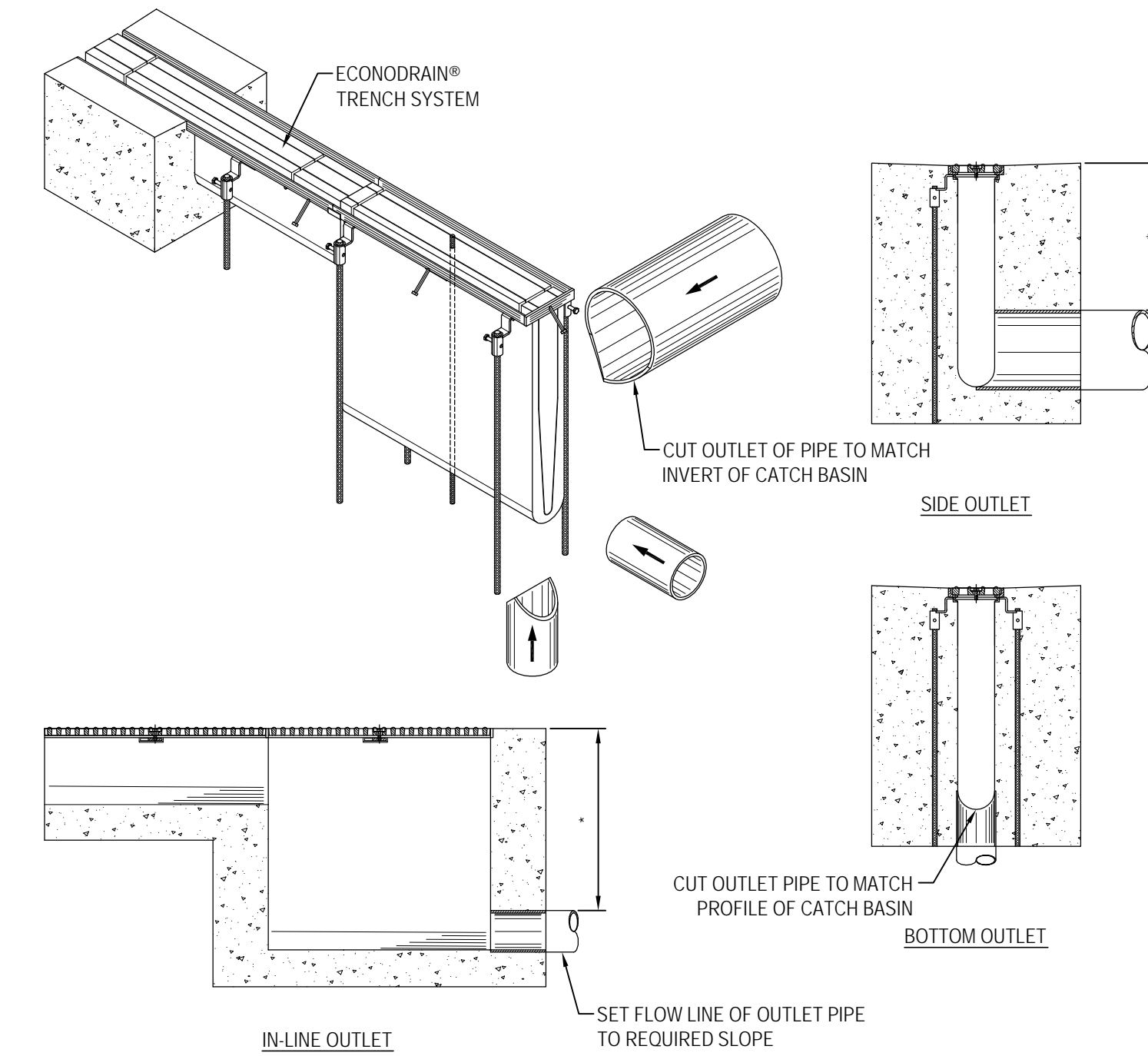
REINFORCED STAMPED STEEL SOLID COVER
#EG0448RSGC - GALVANIZED
#EG0448RSSC - STAINLESS

PERFORATED STAMPED STEEL GRATE
#EG0448GSP - GALVANIZED
#EG0448SSP - STAINLESS
#EG0448RGSB - REINFORCED GALVANIZED
#EG0448RSSB - REINFORCED STAINLESS
8.5% OPEN AREA
5.4 SQUARE INCHES PER LINEAR FOOT

SLOTTED STAMPED STEEL GRATE
#EG0448GSSB - GALVANIZED
#EG0448SSSB - STAINLESS
#EG0448RGSB - REINFORCED GALVANIZED
#EG0448RSSB - REINFORCED STAINLESS
17% OPEN AREA
10.7 SQUARE INCHES PER LINEAR FOOT

EconoDrain® Series #4

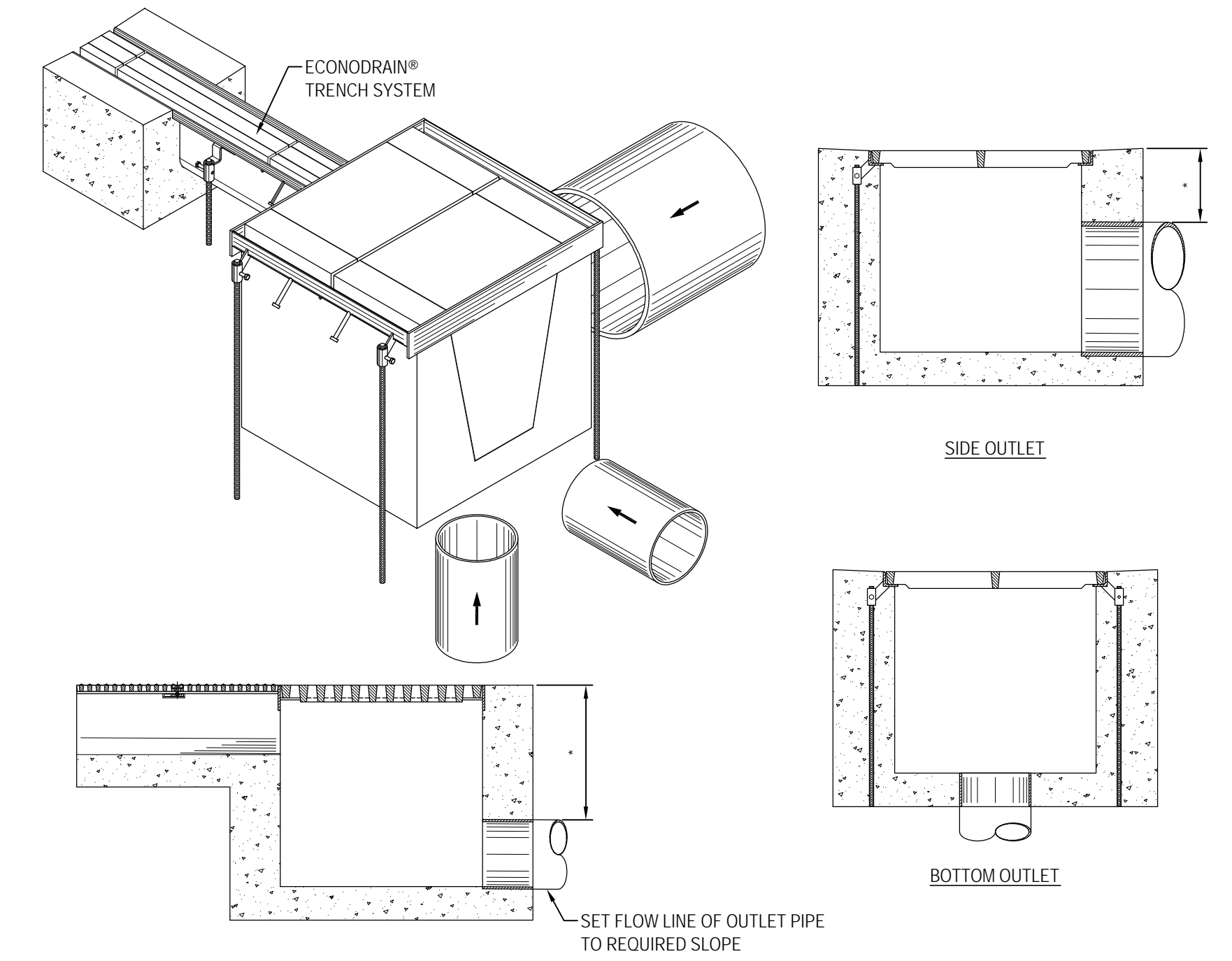
GRATE SELECTION
SCALE 1:16



- NOTES TO THE SPECIFIER:**
1. ADD REBAR AS REQUIRED.
 2. SPECIFY MINIMUM CONCRETE ENCASEMENT.
 3. MINIMUM CONCRETE COVERAGE OF OUTLET PIPE MUST BE GREATER THAN 4 INCHES (LABELED WITH "4").
 4. FINAL CONCRETE THICKNESS PER LOCAL ENGINEERING REGULATIONS AND GUIDELINES.
- CONSTRUCTION NOTES:**
1. INSTALLATION TO BE COMPLETED IN ACCORDANCE WITH MANUFACTURERS SPECIFICATIONS.
 2. SECURE OUTLET PIPE PRIOR TO CONCRETING OPERATIONS.
 3. DO NOT SCALE DRAWINGS.

EconoDrain® Series #4

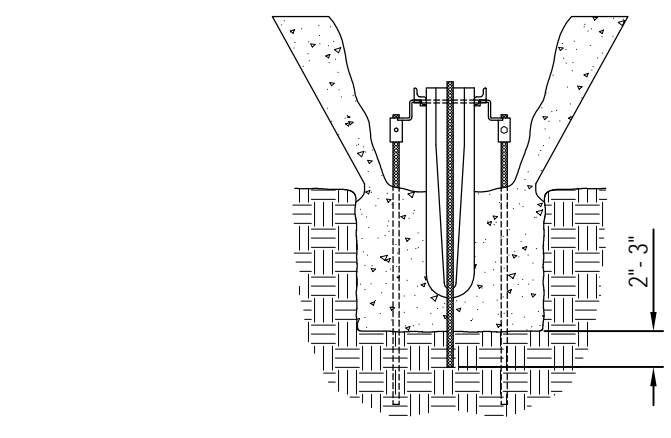
OUTLET FROM IN-LINE CATCH BASIN
SCALE 1:16



- NOTES TO THE SPECIFIER:**
1. ADD REBAR AS REQUIRED.
 2. SPECIFY MINIMUM CONCRETE ENCASEMENT.
 3. MINIMUM CONCRETE COVERAGE OF OUTLET PIPE MUST BE GREATER THAN 4 INCHES (LABELED WITH "4").
 4. FINAL CONCRETE THICKNESS PER LOCAL ENGINEERING REGULATIONS AND GUIDELINES.
- CONSTRUCTION NOTES:**
1. INSTALLATION TO BE COMPLETED IN ACCORDANCE WITH MANUFACTURERS SPECIFICATIONS.
 2. SECURE OUTLET PIPE PRIOR TO CONCRETING OPERATIONS.
 3. DO NOT SCALE DRAWINGS.

EconoDrain® Series #4

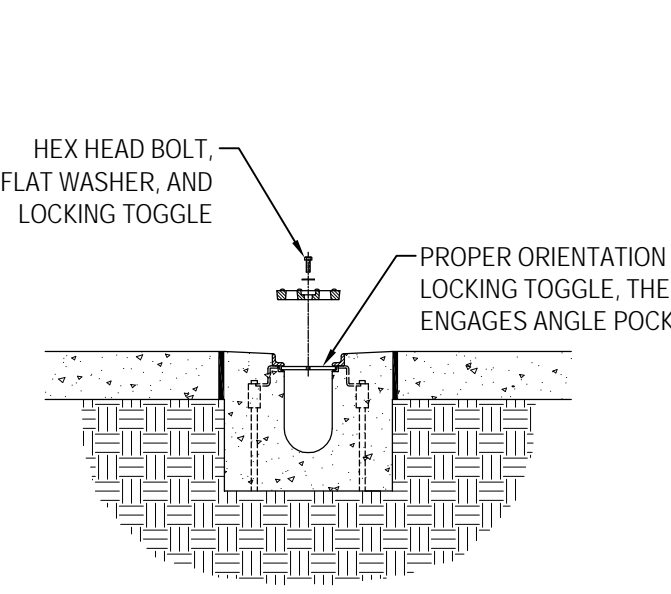
OUTLET FROM CATCH BASIN
SCALE 1:16



EconoDrain® Series #4

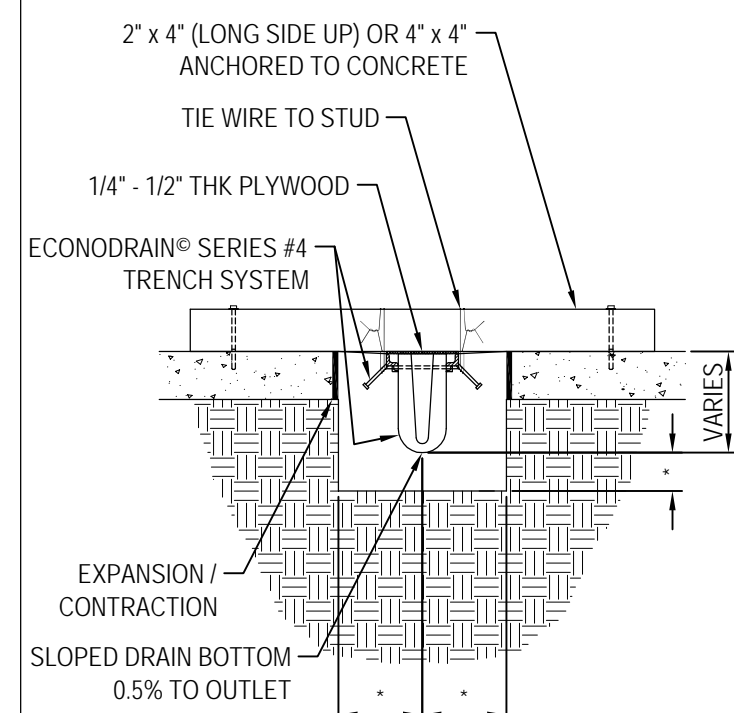
INSTALLING FORMERS IN DEEPER PORTION OF SYSTEM
SCALE 1:16

FOUR (4) HOLES ARE PROVIDED THROUGH THE CENTER OF THE DEEPER EPS FORMS FOR INSERTION OF REBAR. THESE HOLES MAINTAIN VERTICAL ALIGNMENT DURING INITIAL CONCRETE PLACEMENT.
THE REBAR IS DRIVEN ONLY A FEW INCHES INTO THE GROUND OR SUB-BASE.
CONCRETE MUST BE FILLED ON BOTH SIDES OF THE FORM AS EVENLY AS POSSIBLE.
MULTIPLE PASSES ON EITHER SIDE ARE PREFERABLE WHILE AVOIDING FILLING THE TRENCH FROM ONE SIDE.
SEE **INSTALLATION INSTRUCTIONS**, STEP 15: HOW TO POUR CONCRETE AROUND ECONODRAIN® TRENCH FORMING SYSTEM.
THE REBAR MUST BE REMOVED ONCE THE CONCRETE/FORM PRESSURE EQUALIZES BUT PRIOR TO THE CONCRETE SETTING UP.



EconoDrain® Series #4

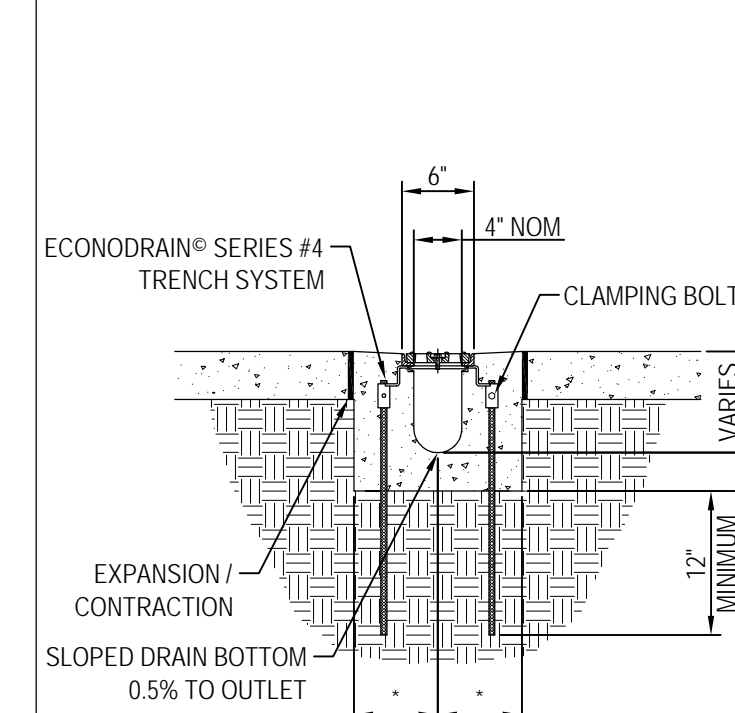
GRATE LOCKING DEVICE INSTALLATION
SCALE 1:16



EconoDrain® Series #4

SUSPENDING FORMERS FROM EXISTING SLAB
SCALE 1:16

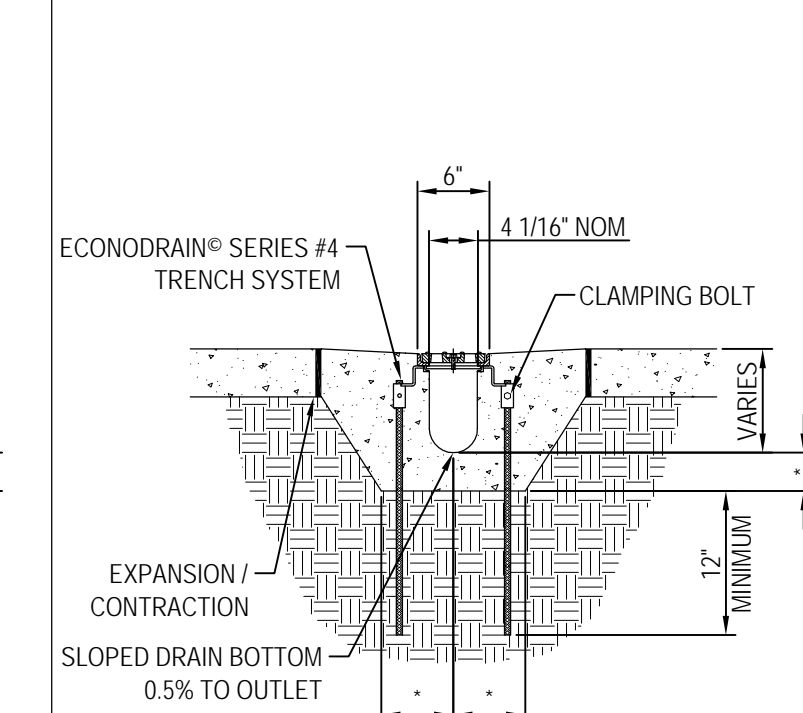
- NOTES TO THE SPECIFIER:**
1. ADD REBAR AS REQUIRED.
 2. SPECIFY REQUIRED DIMENSIONS (LABELED WITH "4").
 3. SHOW TOP OF GRATE ELEVATION IN PLAN VIEW.
 4. EXPANSION / CONTRACTION JOINT PER LOCAL ENGINEERING REGULATIONS AND GUIDELINES.
 5. STANDARD CHANNEL LENGTH IS 8'-0" (96").
 6. STANDARD CHANNEL SLOPE IS 0.5%.



EconoDrain® Series #4

SAWCUT EXISTING SLAB INSTALLATION DETAIL
SCALE 1:16

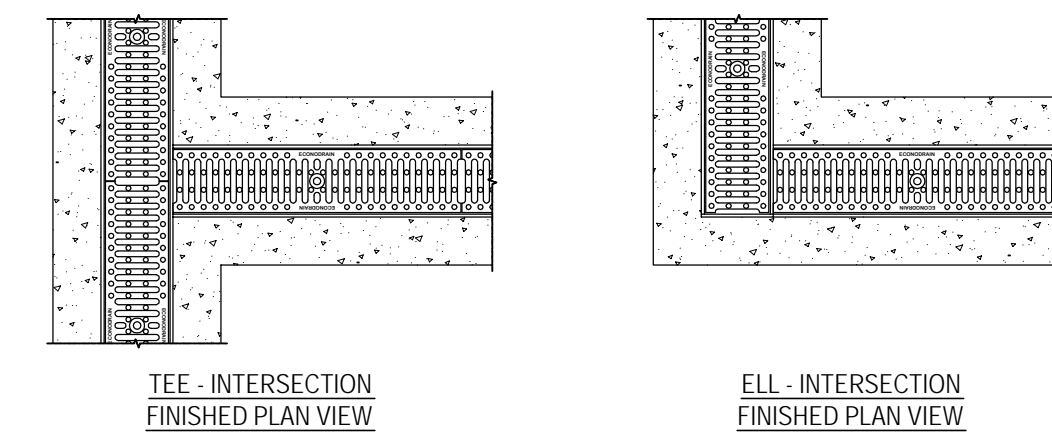
- NOTES TO THE SPECIFIER:**
1. ADD REBAR AS REQUIRED.
 2. SPECIFY REQUIRED DIMENSIONS (LABELED WITH "4").
 3. SHOW TOP OF GRATE ELEVATION IN PLAN VIEW.
 4. EXPANSION / CONTRACTION JOINT PER LOCAL ENGINEERING REGULATIONS AND GUIDELINES.
 5. STANDARD CHANNEL LENGTH IS 8'-0" (96").
 6. STANDARD CHANNEL SLOPE IS 0.5%.



EconoDrain® Series #4

MONOLITHIC POUR INSTALLATION DETAIL
SCALE 1:16

- NOTES TO THE SPECIFIER:**
1. ADD REBAR AS REQUIRED.
 2. SPECIFY REQUIRED DIMENSIONS (LABELED WITH "4").
 3. SHOW TOP OF GRATE ELEVATION IN PLAN VIEW.
 4. EXPANSION / CONTRACTION JOINT PER LOCAL ENGINEERING REGULATIONS AND GUIDELINES.
 5. STANDARD CHANNEL LENGTH IS 8'-0" (96").
 6. STANDARD CHANNEL SLOPE IS 0.5%.



- STEP 1:** REMOVE ANCHOR STAND OR STUD IF NEEDED
- STEP 2:** TRIM INTERSECTION EPS FORM TO HEIGHT OF BOTTOM FRAME
- STEP 3:** APPLY ADHESIVE TO MATING SURFACES
- STEP 4:** FIELD TRIM INCOMING EPS FORMER AS NEEDED
- STEP 5:** TAPE JOINT OF EPS FORMERS AS NEEDED

EconoDrain® Series #4

TEE & ELL INTERSECTION KITS
SCALE 1:16

EconoDrain® Series #4

ENGINEERING / CONSTRUCTION DETAIL TEMPLATE
© 2007 MultiDrain Systems, Inc.
FILE NAME: ED04-DETAILS-00